



# Your Journey to an Efficient Data Management Strategy



**SOLUTION & SERVICE BUNDLE: DATA MIGRATION INTERNATIONAL & VIAMEDICI**

USE CASE: TRANSFORMATION TO S/4HANA

## **FASTER, SIMPLER, AND MORE COST-EFFECTIVE MIGRATION TO SAP S/4HANA WITH VIAMEDICI EPIM AND JIVS IMP**

### **JOINT VALUE PROPOSITION**

Thousands of companies running SAP are planning to migrate to SAP S/4HANA, a process widely considered to be complex, costly, and time consuming. However, a partnership between two technology power houses takes the pain out of this process.



Combining their expertise, Viamedici and Data Migration International provide SAP customers with **a robust and efficient data management infrastructure and strategy.**



**JIVS** from DMI simplifies the migration to SAP S/4HANA and archives historical data, **enabling legacy system decommissioning while reducing costs and environmental impact.**



On the other hand, SAP customers benefit from the **unrivalled data enrichment and multilingual capabilities of Viamedici's EPIM solution** that will support their business operations for years to come without the need for custom code.



# Our Solutions

## Viamedici EPIM

By deploying Viamedici EPIM, SAP customers can enhance their S/4HANA environment with the centralized management of product information and assets.

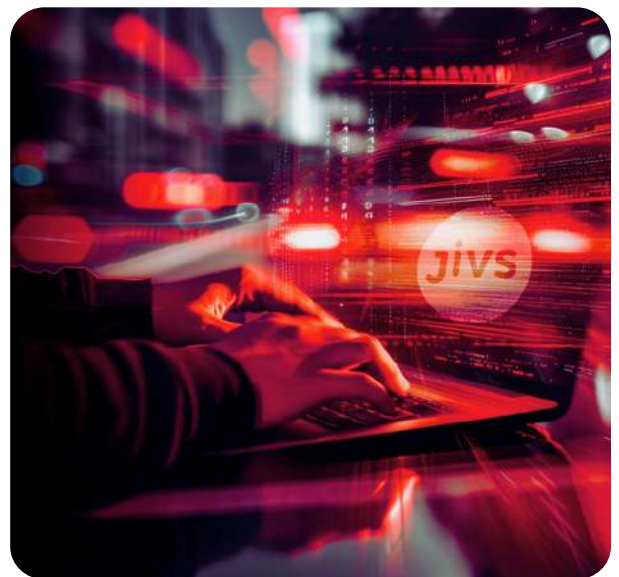
The out-of-the-box solution extends the capabilities of S/4HANA, making businesses e-commerce ready, syndicating information to various channels, and providing **automated translation for multiple languages**.

Viamedici EPIM **enables companies to enrich their data with content such as product descriptions, videos, and images**, and offers **real-time provision and retrieval of information**.

The platform incorporates complex models, rules, and configurations, **reducing complexity and the need for costly customizations in S/4HANA**, leading to **reduced costs and significant time savings**.

**Designed with a composable architecture**, EPIM customers select the modules and services they need to run their business: multidomain master data management, product information management, digital asset management, and dynamic product configuration. With Viamedici EPIM, SAP customers can generate **richer, more granular data, enhancing both the user and customer experience**.

## VIAMEDICI



## JiVS IMP

When moving to SAP S/4HANA, one of the biggest challenges companies face is the transformation and migration of their data. The JiVS Information Management Platform (JiVS IMP) simplifies this by acting as a central hub for the data exported from legacy systems. It separates the historical and operational data at the application layer, archives the historical information, and prepares the operational data for migrating to SAP S/4HANA.

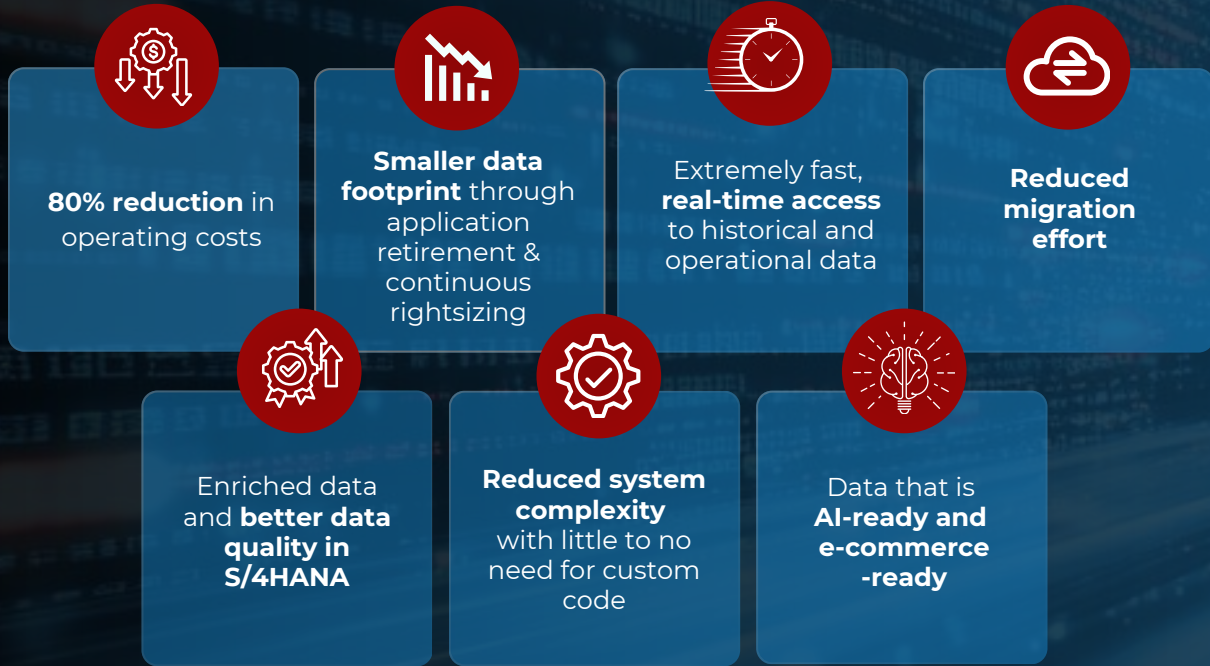
**Some organizations have been able to reduce the amount of data they need to migrate by up to 90%.**

With the remaining data archived securely in JiVS where it remains accessible, the company can decommission its legacy systems. And with less data to migrate, **the overall process is much quicker, requiring considerably less effort**.

This approach ensures **efficient historical data management, reduced complexity, and lower operating costs**.

Seamless integration with SAP and Viamedici EPIM enables **continuous rightsizing and the transfer of redundant data to JiVS, maintaining a streamlined S/4HANA environment for optimal performance and reduced environmental impact**.

# BENEFITS OF THE JIVS & EPIM COMBINED APPROACH



## GET IN TOUCH

Contact us to find out how this dynamic partnership can simplify your journey to SAP S/4HANA and help your organization deploy an efficient data management architecture.



POWERED BY  
**DATA MIGRATION INTERNATIONAL**



[jivs.com](http://jivs.com)

**TOBIAS EBERLE**  
Chief Revenue Officer  
[tobias.eberle@dm-international.com](mailto:tobias.eberle@dm-international.com)

[viamedici.com](http://viamedici.com)

**AL BISSMEYER**  
Global VP  
[al.bissmeyer@viamedici.com](mailto:al.bissmeyer@viamedici.com)

“

*SAP customers generate vast amounts of data, and through this partnership we ensure a faster, simpler, and more cost-effective migration of this data to SAP S/4HANA.*

*We help them keep their live system environment lean so they can derive maximum benefit from it.*

**THOMAS ISELER**

Global Head of Strategic Partnerships  
Data Migration International



POWERED BY



“

*By partnering with DMI, we are able to offer a powerful combination of data management, enrichment, migration, and archiving. SAP customers benefit from a robust and efficient data management architecture that scales in line with their growth and keeps their live system lean thanks to continuous rightsizing.*

**JUERGEN MUELLER**

CEO  
Viamedici

**VIAMEDICI**

**DATA MIGRATION INTERNATIONAL**

The Swiss DMI Group is the leading global expert for data management, application retirement/archiving, and data migration.

Our flagship product JiVS Information Management Platform (IMP) provides a simple yet powerful solution to complex data-driven challenges. Streamlining data migration, application retirement, rightsizing, M&A, and data quality improvement, JiVS IMP accelerates your transformation to a digital enterprise delivering game-changing benefits: up to 80% operational cost savings, 90% reduction in data volume, 50% reduction in migration effort, 100% legal compliance and access to information.

Numerous customers such as ABB, Novartis, Mercedes Benz, Stadler, Syngenta, Buehler, AXA, General Electric, Commerzbank, and SBB benefit from JiVS IMP's cost efficiency, flexibility, and agility.

 [jivs.com](http://jivs.com)

**VIAMEDICI**

Viamedici is a leading global provider of multi-domain MDM, PIM, DAM and product configuration / CPQ software for enterprises, helping global organizations digitize product management, marketing and sales processes.

Together with our international network of consulting partners, we help companies differentiate themselves in the digital marketplace by providing accurate customer data, complex and configurable product data and real-time information for both eCommerce and print catalogs.

More than 300 market leaders worldwide, in hundreds of languages and thousands of markets, have been using our industry-leading solutions for over 20 years, consistently ranking us #1 in customer satisfaction in leading analyst reports.

 [viamedici.com](http://viamedici.com)